

Android TML 4.14.01 Release Notes

Last Modified on 01/29/2026 6:27 pm EST

Android TML Release

Version: 4.14.01

Overview

These Android releases continue MultiLine's evolution as a **carrier-grade, enterprise-ready communication platform**, delivering meaningful improvements across **messaging parity, operational reliability, security, and IT manageability**.

Between December 2025 and January 2026, MultiLine introduced user-visible enhancements that reduce ambiguity in messaging, improve availability communication, and strengthen trust—while also delivering behind-the-scenes improvements that simplify enterprise support, improve stability, and reinforce compliance expectations.

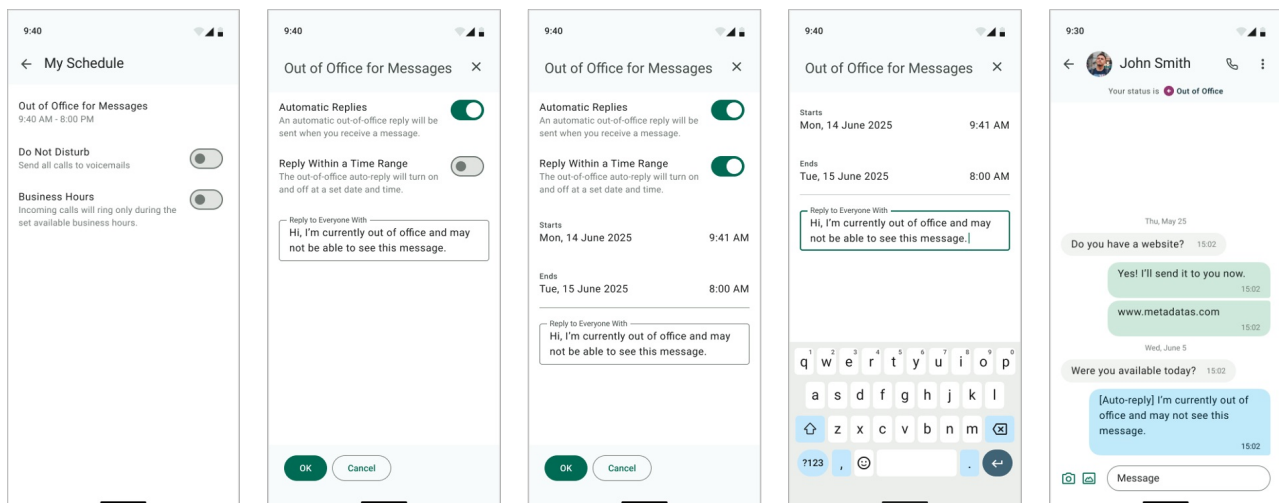
What's New & Enhanced

Out-of-Office (OOO) Auto-Reply Messaging

MultiLine now allows users to automatically notify contacts when they are unavailable, helping set clear expectations across business communications.

Key capabilities

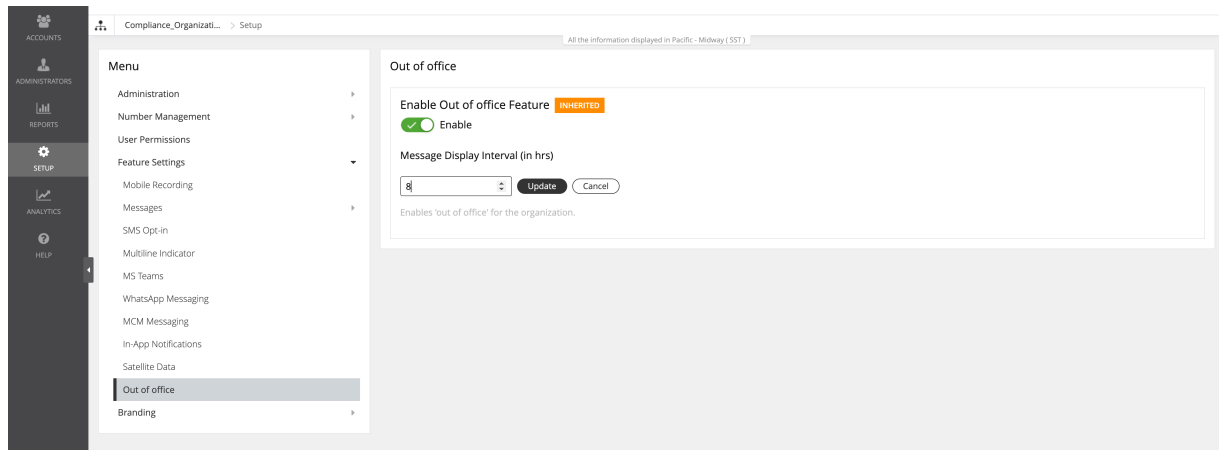
- Automatic OOO replies for **SMS, MMS, and supported social messaging channels**
- Flexible scheduling with defined start/end times or indefinite activation
- Built-in protection against message fatigue: auto-replies are sent **once every 8 hours per sender by default**



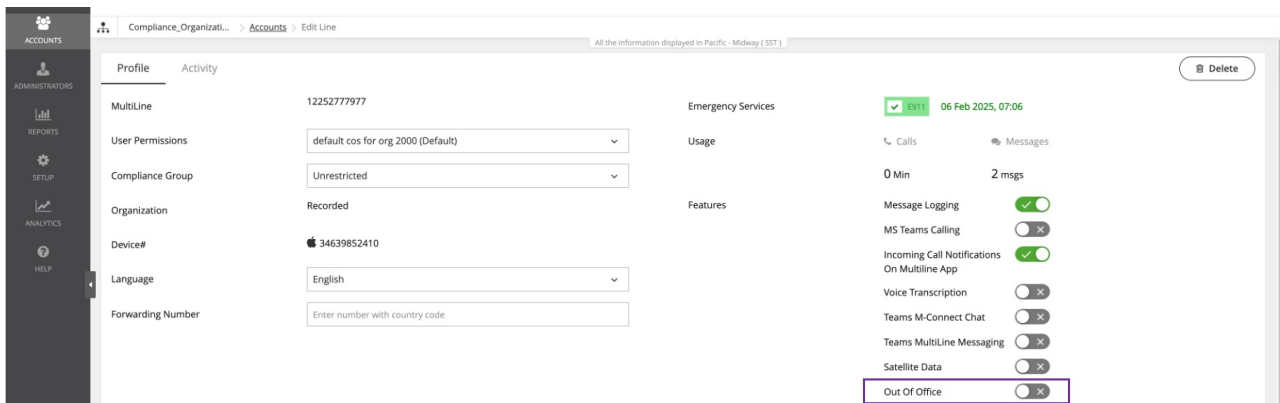
Enterprise controls

- Administrators can adjust the reply frequency via the **Movius Management Portal (MMP)**

•



- The feature can be disabled on a per-user basis to meet organizational policy requirements



Why these matters

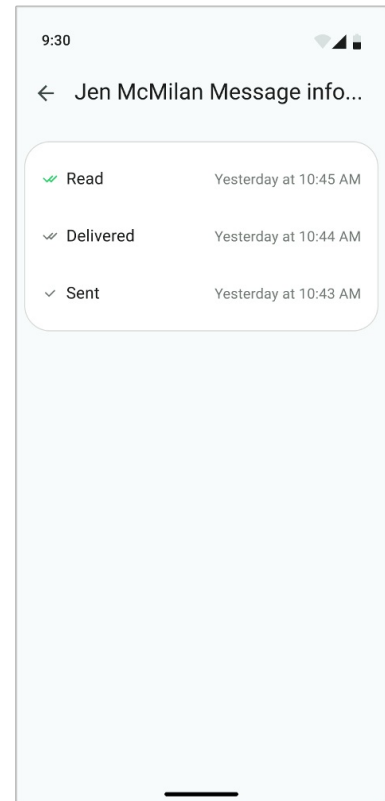
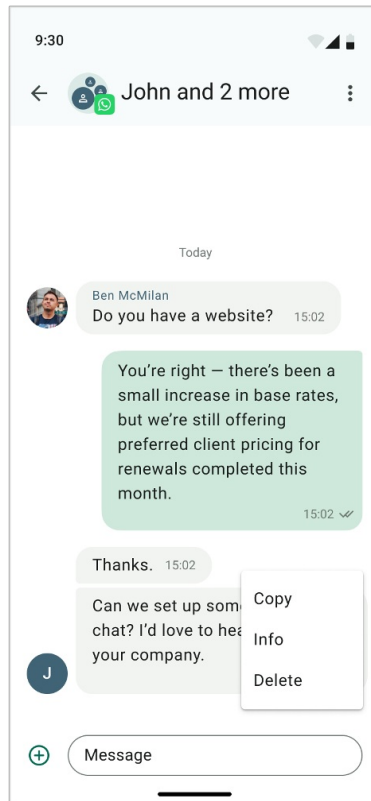
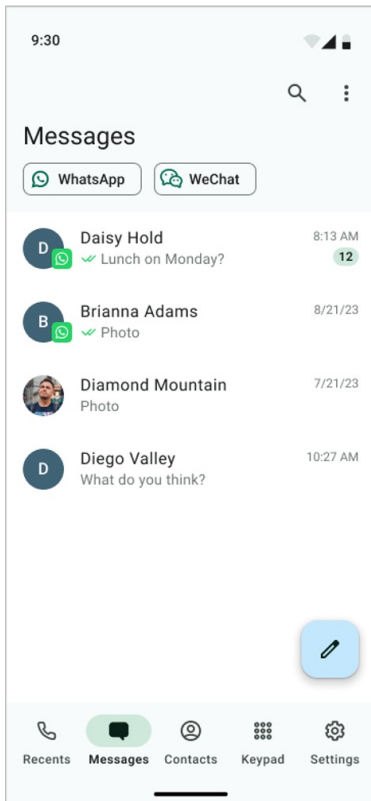
This feature reduces missed expectations, improves professional communication, and brings MultiLine closer to the behavior users expect from modern enterprise messaging tools—without compromising administrative control.

WhatsApp Message Status (Delivered & Read)

MultiLine now supports real-time WhatsApp message status indicators, delivering a more familiar and transparent messaging experience.

How it works

- Message states mirror native WhatsApp behavior: **Delivered, Read**
- In group conversations:
 - Status reflects **WhatsApp guest activity only**
 - Read and delivery states for other MultiLine users are intentionally hidden
 - All MultiLine participants see consistent, guest-level status visibility



Important note

- Status indicators apply **only to messages sent after upgrading** to v4.14.01
- Messages sent prior to the upgrade will not display status

Why these matters

Users gain clarity and confidence in message delivery while MultiLine maintains its enterprise privacy model—striking the right balance between transparency and control.

Operational Reliability & Supportability

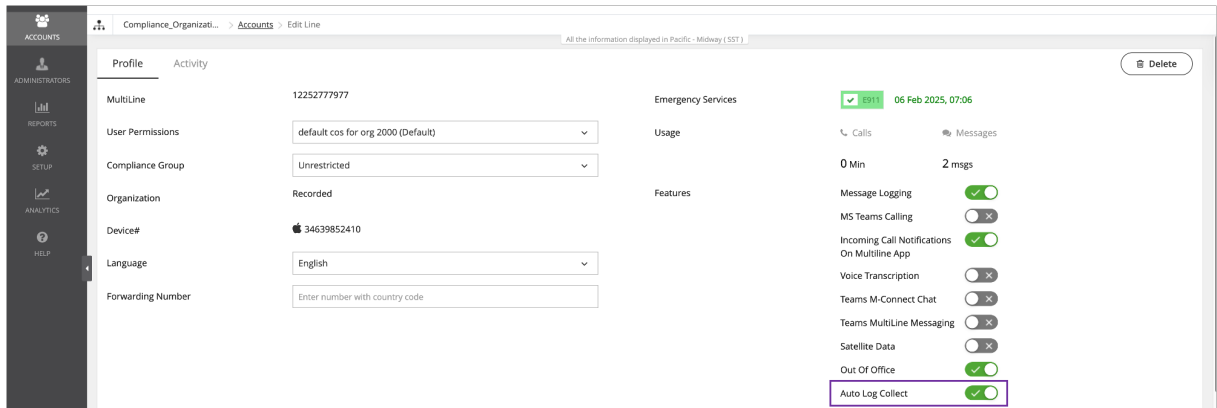
Automatic Log Collection for Faster Support

(Introduced in v4.13.01)

To reduce friction during issue investigation, MultiLine now supports **automatic background log collection** on Android.

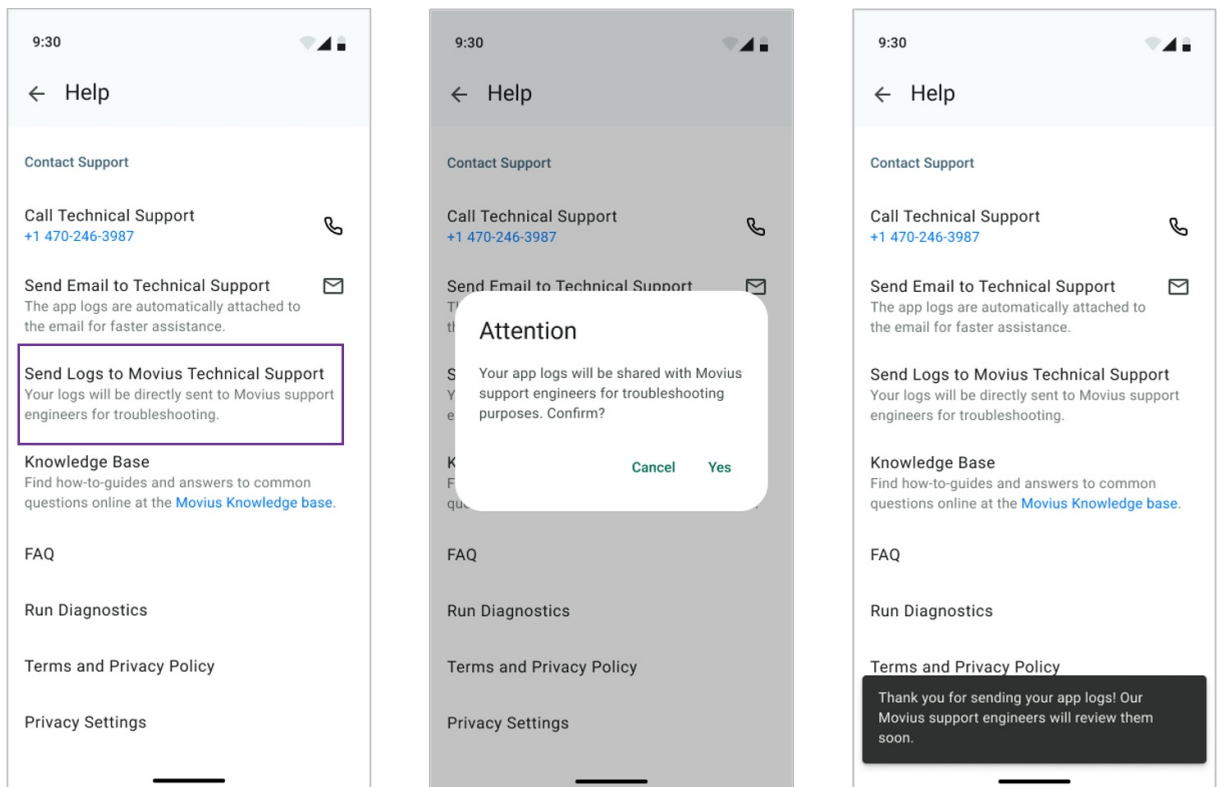
What's improved

- Admins can enable automatic log uploads through the **MMP**
- The app securely uploads logs from the **previous 24 hours**
-



- Log collection runs silently, with no impact on user experience

•



Fallback support

- If automatic upload is unavailable, users can still manually share logs via email or directly with Movius support

Why these matters

This significantly reduces time-to-resolution, minimizes user involvement in troubleshooting, and improves operational efficiency for enterprise IT and support teams.

Strengthened VoIP Security with Updated Encryption

(Introduced in v4.13.01)

MultiLine Android now enforces stronger, modern VoIP encryption standards:

- **AEAD_AES_256_GCM**

- **AES_256_CM_HMAC_SHA1_80**

Why these matters

These updates enhance call security, improve call stability, and ensure alignment with enterprise security and compliance expectations—especially in regulated environments.

Fixes & Stability Improvements

Emergency Calling Accuracy (E911)

- Fixed an issue where **latitude and longitude values could be transmitted as zero during an emergency call**
- Ensures accurate location information is provided during E911 scenarios

Impact

Improves emergency call reliability and supports compliance with carrier and regulatory requirements.

Network Status Indicator Accuracy

- Fixed an issue where the **satellite network indicator could remain visible after switching to a mobile network**
- Network status now accurately reflects the active connection

Impact

Reduces user confusion and improves trust in network state indicators.
