

Activating MultiLine for Intune - Android Data Only

Last Modified on 11/27/2023 3:55 pm EST

If you're installing MultiLine on a tablet or device without cellular connectivity, this instruction is for you.

Everything you need to get started will be sent to you in a MultiLine for Intune invitation. You can use it to start the activation process.

Before you start:

- Download and install [Company Portal](https://docs.microsoft.com/en-us/mem/intune/user-help/sign-in-to-the-company-portal) [🔗](https://docs.microsoft.com/en-us/mem/intune/user-help/sign-in-to-the-company-portal) (<https://docs.microsoft.com/en-us/mem/intune/user-help/sign-in-to-the-company-portal>) [🔗](https://docs.microsoft.com/en-us/mem/intune/user-help/sign-in-to-the-company-portal).
- Installation instructions: [Android](https://docs.microsoft.com/en-us/mem/intune/user-help/enroll-device-android-company-portal) [🔗](https://docs.microsoft.com/en-us/mem/intune/user-help/enroll-device-android-company-portal) (<https://docs.microsoft.com/en-us/mem/intune/user-help/enroll-device-android-company-portal>) [🔗](https://docs.microsoft.com/en-us/mem/intune/user-help/enroll-device-android-company-portal) | [Android \(with enrollment\)](https://docs.microsoft.com/en-us/mem/intune/user-help/enroll-device-android-work-profile) [🔗](https://docs.microsoft.com/en-us/mem/intune/user-help/enroll-device-android-work-profile) (<https://docs.microsoft.com/en-us/mem/intune/user-help/enroll-device-android-work-profile>) [🔗](https://docs.microsoft.com/en-us/mem/intune/user-help/enroll-device-android-work-profile).

Get your invitation

- Expect an invitation to be sent to your work email. *Please don't reply to this email, as it is auto-generated.*
- If you open the link on your phone, you can click the link in the invitation to download and launch the MultiLine app.

If this is your first time using MultiLine, continue with the steps below. Otherwise, make sure you uninstall any existing MultiLine apps before using these instructions.

Mobile App:

Steps to activate MultiLine for Intune:

1. Install and configure Microsoft Authenticator, if you haven't already.
2. Click the button below to install or open the app.

Download and Activate

3. Sign in using your corporate username and password.

The application will guide you through the rest of the activation process. You'll receive your MultiLine number and can start calling and messaging your contacts.

After you have activated MultiLine for Intune on your mobile phone, you can also set up your MultiLine Desktop. MultiLine Desktop allows you to call and message from your computer using your MultiLine number.

Steps to activate MultiLine Desktop:

1. Access MultiLine Desktop at [{URL_Hyperlink}](#).
2. Enter the following details:
 - a. Username: {%Username}
 - b. Password: {%Password}
3. Create a new password.

If you have any issues activating your mobile or desktop MultiLine app, please contact {%Company} IT Department. You can also learn more about using these applications at <https://help.moviuscorp.com>.

Example Invitation - The appearance of invitation will vary

NOTE: Movius does not send or manage MultiLine invitations. Please reach out to the appropriate contact at your organization to request new invitations or receive troubleshooting assistance.

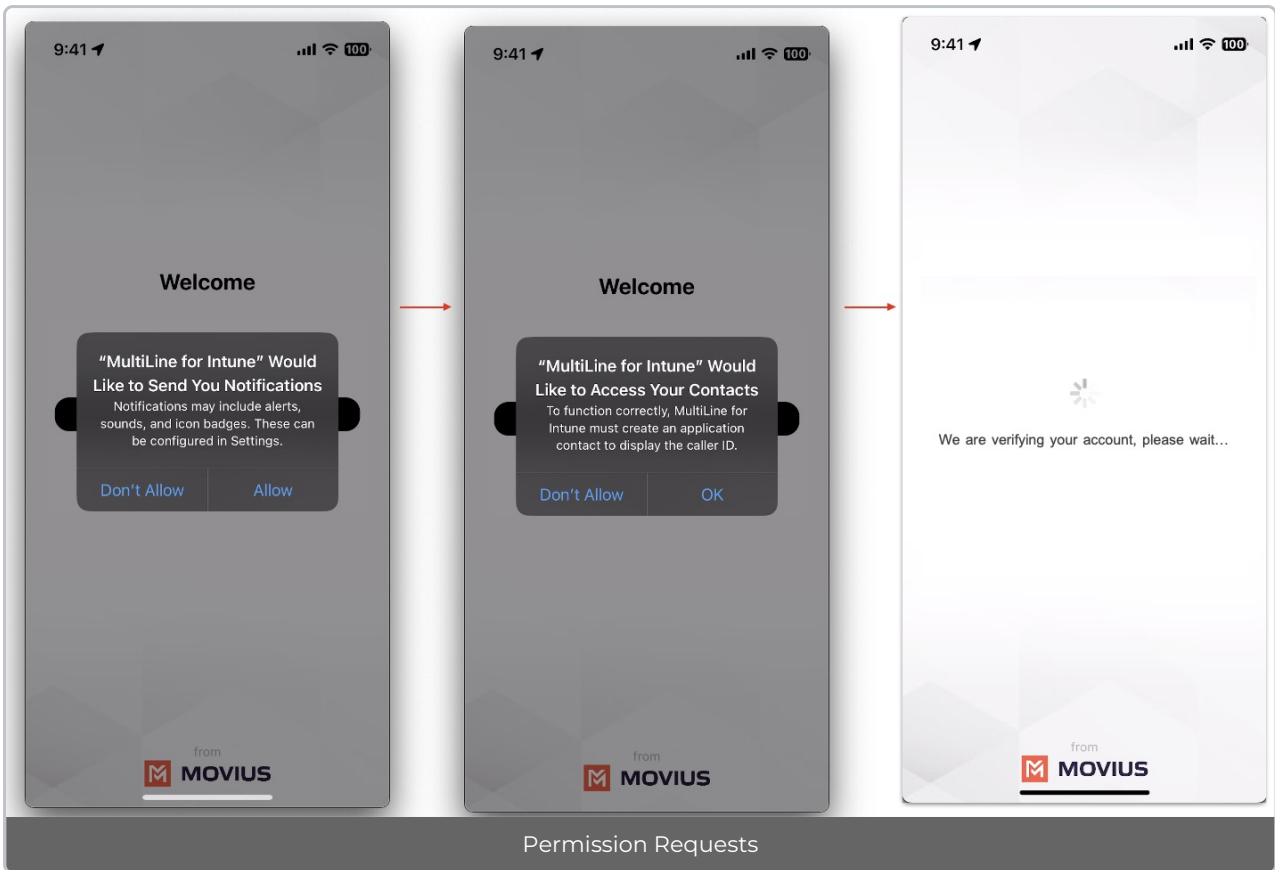
Activate MultiLine for Intune

Once you download the MultiLine for Intune app from Google or Play Store, open the app to begin the activation process.

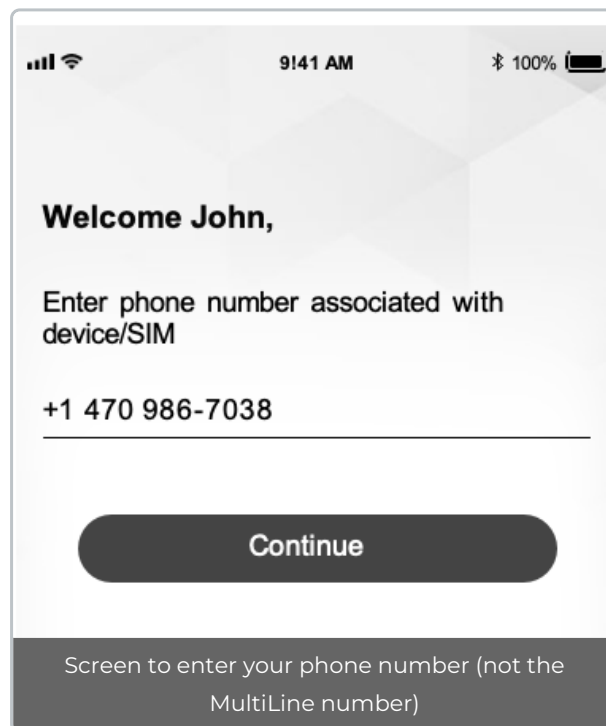
1. Tap **Continue** to begin.



2. Confirm any permission requests - Microphone, Contacts, Notifications - as they appear.

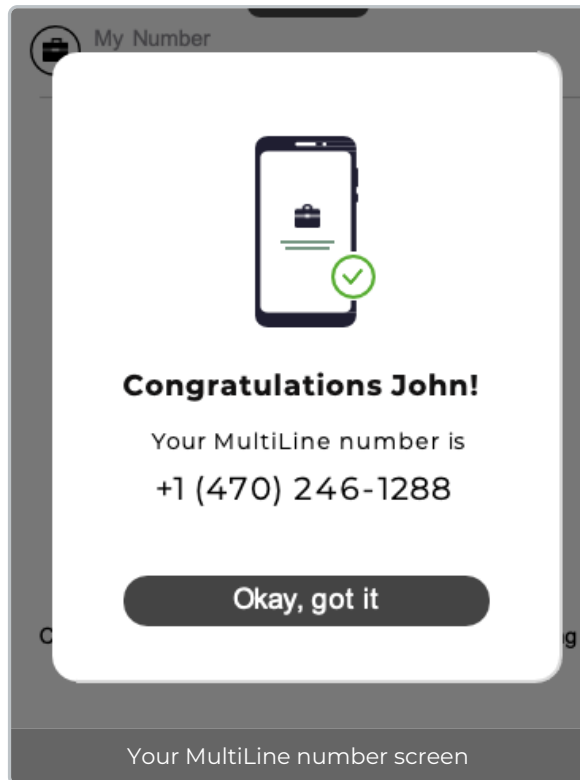


3. Some users will be prompted to enter their phone number and confirm that it is correct on the next screen.



4. Select Yes after confirming that you entered your phone number correctly.

6. Your new number displays. Tap **Okay, Got it** to continue.



That's it!

You've activated MultiLine for Intune.
